

# Two Sisters Lake

---

- Page 1: AIS Monitoring Report of July  
15 and 16, 2020
- Page 6: Landing Only AIS Monitoring  
Report of July 30, 2014



**Land & Water Conservation Department**

**Two Sisters Lake AIS Monitoring Report**

Field Dates: June 15<sup>th</sup> and June 16<sup>th</sup>, 2020  
WBIC: 1588200  
Previous AIS Findings: Banded Mystery Snail, Chinese Mystery Snail, Rusty Crayfish  
New AIS Findings: Aquatic Forget-Me-Nots  
Field Crew: Aubrey Nycz, AIS Project Leader, and Rachel Cook, AIS Project Assistant, Oneida County Land and Water Conservation Department  
Report By: Rachel Cook

On July 15<sup>th</sup> and 16<sup>th</sup>, 2020, Aubrey and I went to Two Sisters lake for AIS monitoring and to assess water clarity and quality. Two Sisters lake is a 719-acre oligotrophic, spring-fed lake, with a maximum depth of 63 feet. It is reported to have substrate made of 65% sand, 25% gravel, and 10% muck. It is also reported to have musky, panfish, largemouth and smallmouth bass, northern pike, and walleye. There is one public boat landing located on the eastern shoreline off of Black Lake Rd. Most of the perimeter of the lake is inhabited by residents.

On Wednesday, July 15<sup>th</sup>, 2020, Aubrey and I started monitoring at the public boat landing and paddled in a counter-clockwise direction around the lake. We looked specifically for aquatic forget-me-nots because a resident has reported it, specifically in the bay just north of the landing. We also monitored the shoreline and shallow areas for other invasive species. The weather while monitoring was slightly overcast and the water was calm, making it ideal for maneuvering the canoe and visualizing the species in the lake. During our time monitoring, we did spot aquatic forget-me-nots along the northern shoreline (marked in Figure 2). We took some plants as samples in order to send them to the Department of Natural Resources for verification.

The following day, July 16<sup>th</sup>, 2020, Aubrey and I returned to finish monitoring the shoreline and shallow areas. The weather was again ideal for monitoring, being that it was sunny, not very windy, and the air temperature was in the 70's. We did see signs of rusty crayfish in the shallow areas of the lake, as well as one new spot of aquatic forget-me-nots on the island on the western half of the lake.

During both of the days monitoring on Two Sisters lake, Aubrey and I saw a few banded mystery snails and Chinese mystery snails as well as the aquatic forget-me-nots. The snails did not seem to be a problem, and they were already known to be established there. The aquatic forget-me-nots did not seem to pose an issue, being that there were only some small clusters of few numbers of plants. This is something that should be monitored though in the coming weeks as well as next year to make sure they do not spread rapidly.

Besides these three invasives, Two Sisters Lake seemed very clear and healthy, as it fosters many native plants and animals. We observed Spatterdock, Fireweed, Pickerel weed, Variable-leaf Pondweed, Water Shield, Small Duckweed, Yellow Loosestrife, Lake Quillwort, Fern Pondweed, Blue Flag Iris, Large-leaf Pondweed, and Northern Water Millfoil. Some of these plants can be seen below in Table 1.

**Findings:** Taken 10:00 a.m. – 12:00 p.m. on July 15<sup>th</sup>, 2020 and 8:00am – 12:00pm on July 16<sup>th</sup>, 2020

Aquatic Invasive Species:

Aquatic forget-me-nots were found in clusters along the northeastern shoreline. A few stray plants were found on the southern shoreline as well.

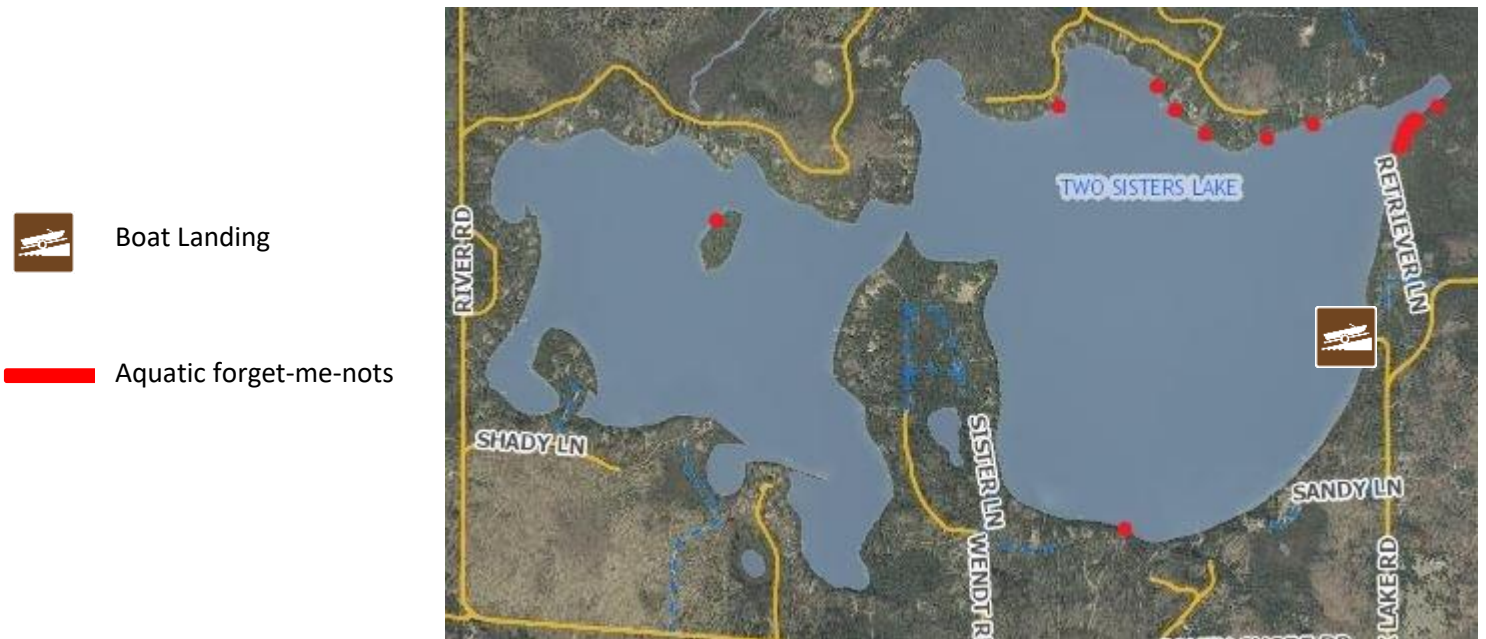
Water quality:

The water was clear and looked to be a blue/green color.





**Figure 1.** Map of Oneida County, WI with Two Sisters Lake circled in red (approximate location).








**Figure 2.** Map of Two Sisters Lake with boat landing and location of aquatic forget-me-nots labeled.



**Table 1.** Plants found in Two Sisters Lake when monitoring.

Common Name Scientific Plant Name	Description	Image
<p>Pickrel Weed</p> <p><i>Pontederia cordata</i></p>	<p>An aquatic plant with thin, bright green leaves. Emergent leaves tend to be arrow shaped with 6 parted, blue flowers. This plant is native.</p>	 <p>Photo Credit: ediblewildfood.com</p>
<p>Aquatic Forget-Me-Nots</p> <p><i>Lythrum salicaria</i></p>	<p>A perennial plant that is 4-12 inches tall. It has alternate leaves that are oblong to lance-shaped. Flowers are blue with a yellow center and have 5 petals. They bloom from May to September. This plant is invasive!</p>	 <p>Photo Credit: Oneida County AIS</p>
<p>Blue Flag Iris</p> <p><i>Iris versicolor</i></p>	<p>A semi-aquatic perennial. Blue flowers, 6 parted, 6-8 cm wide. Sepals have green markings surrounded by a white zone. Leaves are narrow, arranged in flattened, fan-like clusters. Flowers stalks are taller than the leaves. This is native.</p>	 <p>Photo Credit: Wisconsin DNR</p>
<p>Fireweed</p> <p><i>Epilobium angustifolium</i></p>	<p>Pink, purple or blue colored flowers that have four petals. Flowers are widely spaced and extend out from the stem. Alternate toothed leaves. Grows 2-6 ft tall. This plant is native.</p>	 <p>Photo Credit: pnwplants.wsu.edu</p>

Common Name Scientific Plant Name	Description	Image
<p>Bullhead Pond Lily</p> <p><i>Nuphar variegata</i></p>	<p>An aquatic plant with heart-shaped leaves that can grow to be 15 inches long. This plant also has a yellow, cup-shaped flower. This plant is native.</p>	 <p>Photo Credit: Jomegat's Weblog</p>
<p>Water Shield</p> <p><i>Brasenia schreberi</i></p>	<p>An aquatic plant with stems up to 2 meters long. This plant has small floating leaves and reddish purple flowers that have 6-8 petals. This plant is native.</p>	 <p>Photo Credit: Shannon Sharp</p>
<p>Large Leaf Pondweed</p> <p><i>Potamogeton amplifolius</i></p>	<p>A submerged aquatic plant. Submergent leaves are very broad (4-7 cm wide and 8-20 cm long), arched and slightly folded. Floating leaves are 2-23cm long, with a petiole longer than the leaf blade. This plant is native.</p>	 <p>Photo Credit: Paul Skawinski</p>
<p>Northern Water Milfoil</p> <p><i>Myriophyllum sibiricum</i></p>	<p>An aquatic plant with 5-10 pairs of leaflets per leaf. Leaves are usually a bright green. Stems are tan to green and stiff enough to hold shape when taken out of the water. This plant is native.</p>	 <p>Photo Credit: Alison Fox</p>
<p>Variable Leaf Pondweed</p> <p><i>Potamogeton gramineus</i></p>	<p>Submergent leaves with 3-7 veins and floating leaves with 11-19 veins. Can be found growing at various water depths. This plant is native.</p>	 <p>Photo Credit: outdooralabama.com</p>

## Two Sisters Lake Landing Only AIS Monitoring Report

WBIC: 1588200  
Previous AIS Findings: Banded Mystery Snail, Chinese Mystery Snail, Rusty Crayfish  
New AIS Findings: None  
Field Date: July 30, 2014  
Field Crew: Stephanie Boismenu and Sara Mills, AIS Project Assistants,  
Oneida County Land and Water Conservation Department  
Report by: Sara Mills

Stephanie Boismenu and I monitored the boat landing of Two Sisters Lake on July 30, 2014 with the assistance of Shelley Lehman. We walked throughout the beach and about 100 feet on both sides of the landing. We walked as deep as we could with aquascopes. We also checked all the docks for anything attached to the legs. We knew that they had banded mystery snails, which we found in abundance at the landing. No additional invasive species were found. The landing was very sandy and clear.