

NOTICE OF MEETING

COMMITTEE: Conservation and UW-Extension Education Committee (CUW)

LOCATION: County Board Room, Courthouse and Virtually by ZOOM

DATE: MONDAY, November 11, 2024 TIME: 1:00 p.m.

ZOOM LINK: <https://us06web.zoom.us/j/86913759203?pwd=XZXrkNiXwgw3ir4svDN65rKa8ErIMh.1>

PHONE: 1-312-626-6799 Meeting ID: 869 1375 9203 Passcode: 930283

Zoom is offered as a public viewing platform only.

If zoom functionality drops, the meeting will continue in person at the location listed above subject to Committee quorum.

QUESTIONS? Oneida County Land and Water Conservation Department (LWCD) - 715-369-7835

**NOTE: All agenda items assumed to be discussion/decision items.
When used, this symbol /s/ represents a valid, virtual, Committee signature.**

1. Call to Order and Chairperson's Announcements.
2. Approve Agenda for Today's Meeting (*order of agenda items at discretion of Chair*).
3. Approve Minutes from the Last Meeting – October 14, 2024.
4. Date(s)/Location of Future Meetings.
5. Public Comment. (*Time limit: 3 minutes*)
6. Urban Forestry Grant: City/County Service Agreement.
7. Ordinance Amendment #13-2022 to Amend Chapter 9: Shoreland Protection Ordinance.
8. Amending Chapter 26 of the Oneida County Comprehensive Land Use Plan Ordinance.
9. Fall 2024 Land + Water Conservation Board (LWCB) Election of LCC Members.
10. Notification of Hearing & Resolution: to Consider Altering a Highway in the Town of Minocqua.
11. Lake District Reports.
12. PFAs Update.

13. Office Reports.
 - a. Budget Actual.
 - b. Invoices Paid.

14. LWCD items to include on next agenda.

15. Public Comment. *(Time limit: 3 minutes)*

16. Area 4 Extension Director Update – *A Rehberg*.
 - a. UWEX Status Update.
 - i. Staffing and Communication Plan.
 - ii. Program Development for City of Rhinelander.
 - iii. Nicolet Facilities & Partnership Update.
 1. Rent Agreement for FY 2025

17. UWEX Office Reports.
 - a. Budget Actual.
 - b. Invoices Paid.

18. UWEX Items to include on next agenda.

19. Adjournment.

Notice of Posting _____ Time: 12:00 p.m. Date: 11/05/2024 _____ Place: Courthouse Bulletin Board
 Collette Sorgel, Chair, CUW Committee

Notice posted by chief presiding officer or his/her designee. Additional information on a specific agenda item may be obtained by contacting the person who posted this notice at 715-369-7835.

News Media Notified via Mail/Fax/E-mail: _____ Time: 12:00 p.m. _____ Date: 11/05/2024

Northwoods River News	Lakeland Times	Star Journal	Tomahawk Leader
Vilas Co. News Review (TL)	WJFW-TV Channel 12	NRG Media	WCYE Radio - 93.5
WRJO Radio - 94.5	WPEG - 98	WXPR Radio - 91.7	

Notice is hereby further given that, pursuant to the Americans with Disabilities Act, reasonable accommodations will be provided for qualified individuals with disabilities upon request. Please call Tracy Hartman at (715) 369-6125 with specific information on your request, allowing adequate time to respond to your request.

**Conservation/UW-EX Education Committee
Monday, October 14, 2024 Minutes
Oneida County Courthouse, County Board Room and Virtually by ZOOM**

Committee Members: Chair Collette Sorgel, Linnaea Newman, Lenore Lopez, Robb Jensen and Chris Schultz.

Others Present: Eric Rempala, JoAnne Lund, Beckie Gaskill, Karl Jennrich, Michele Sadauskas, Stephanie Boismenu, Amber Rehberg, Mary Stys, Allison Wilson and Jessica Young. Petra Pietrzak and Jonna Jewell on Zoom.

1. Call to order and Chairperson's Announcements:

Chair Sorgel called the meeting to order at 1:03 p.m. The meeting was properly posted and handicapped accessible and ADA compliant. The symbol /s/ represents a valid virtual attendee's signature.

2. Approve Agenda: A motion by Newman/Lopez to approve the October 14, 2024 Agenda with the order of items at the Chair's discretion. All ayes; motion carried.

3. Approve Minutes: A motion by Jensen/Newman to approve the minutes of September 9, 2024 as presented. All ayes; motion carried.

4. Dates/Location of Future Meetings:

Monday, November 11, 2024 at 1:00 p.m. Oneida County Courthouse; County Board Room.

5. Public Comment:

Eric Rempala (Town of Cassian) addressed item #11. Rempala gave an update on PFAs. The DNR has started testing deer in a 3-mile radius around Stella. Rempala is not sure when the test results will come back, but he believes the results will reflect the outcome in Marinette, where it was decided that the deer will be fine to consume.

Rempala attended a Wisconsin Council on Forestry Meeting in Rhinelander. It covered what happened in the Pelican River Forest; the process, what it was like and what's going on now. Rempala took a tour of the Pelican River Forest, which he thought was fantastic, and believes the Conservation Fund went above and beyond delivering what they had promised. The roads are open and people can access it, and there are maps available at the entrances. Rempala stated that information on sustainable forestry of the property was provided. Rempala's final thoughts were that everything looked great, and that the Council was extremely satisfied. He noted that there is a lot of support for this type of easement going forward.

6. Out-of-state tax status approval for Conference lodging – S Boismenu.

Boismenu will be attending the Upper Midwest Invasive Species Conference in Duluth, Minnesota, November 11-14, 2024 as a presenter. Minnesota does not recognize the Wisconsin Oneida County Sales Tax Exemption and Boismenu is requesting approval from the Committee to pay the out-of-state taxes.

Jensen/Newman made a motion to approve the out-of-state tax for the conference held in Minnesota. All ayes; motion carried.

7. Farmland Preservation Program Renewal:

Sadauskas received additional information on the forest angle and would like to postpone this topic until a later CUW Committee meeting to allow for additional time to review the extra materials and to get a bigger picture.

Jensen/Schultz made a motion to postpone the Farmland Preservation Program Renewal, agenda item #7, to a future meeting. All ayes; motion carried.

8. Insurance Claim – Theft of LWCD-Owned Trailer:

The Land and Water Conservation Department (LWCD) was storing a trailer and an anchor chain scarifier at the DNR Forestry Shop, both of which were rental items for the community to use. The trailer's lock was cut and stolen. The DNR filed a police report. The value of the trailer was estimated at \$3,000. The minimum limit for insurance through Oneida County is \$5,000. There will be no recoup of the money due to the minimum limit not being met. The anchor chain scarifier is accounted for and will still be rented out, but renters will need to use their own trailer to transport it. LWCD is not looking to replace the trailer, as there is no substantial need for it at this time.

9. Lake Classification Update:

JoAnne Lund presented to the CUW Committee about the Lake Classification System. The Oneida County High Quality Water Protection Project is funded through a DNR grant and has two branches; one is promoting high quality waters in the county and the other is developing the lake classification system.

Lake classification considers a lake's sensitivity level to outside stressors to help identify appropriate protection activities. In order to assess the sensitivity, four physical features were assessed: the size, maximum depth, shape of the lake, and hydrology. To assess the health status, two DNR generated databases were consulted: the High Quality Waters list and the Healthy Watersheds list. Both were used in combination to create the lake classes.

There are currently three defined lake classes:

- Class 1 (High Protection – 133 lakes)
- Class 2 (Moderate Protection – 287 lakes)
- Class 3 (Less Protection – 31 lakes)

It is important to note that all lakes deserve protection; this is a guideline to help when resources are limited. The classes identified above only include the lakes with names in Oneida County. At this time, there is no complete data set for lakes with no names in Oneida County. It is a future goal to develop a guideline for the unnamed lakes.

An advisory group was formed and currently has 27 sitting members. Members include DNR water-quality specialists, UW Extension staff, Planning & Zoning staff, a realtor, a Northwoods Land Trust member, a nature journalist, individuals from lake groups, and Vilas County counterparts that have backgrounds in this type of work and are beneficial to the project.

The advisory group meets every six months; there have been a total of three meetings so far. A summary and video of each meeting is posted to the website and is available to the public.

The goal of this effort is to help determine protection activities to mitigate outside stressors to which lakes are subjected. Four stressors have been identified: public access, aquatic invasive species, development density, and enhanced wakes. Currently the group is defining and creating a guideline that lists protection activities based on the resources available.

Part of the DNR grant includes an outreach component. Once the lake classification is completed, LWCD is looking to change the Land & Water Resource Management Plan, and then they will conduct outreach and awareness. The grant will help with the educational component, which includes reaching out to non-profit groups. There will be more outreach activities in the future, including press releases. These will be solely advisory protection activities, but there is a possibility of encouraging towns to create their own ordinances since the advisory group cannot enforce the guidelines.

There is no set date for the next meeting; Sadauskas will inform the Committee of the next meeting.

10. Lake District Reports:

Chair Sorgel noted that Thunder Lake does not have any new updates. The last meeting did not take place due to not having a quorum. Letters will go out to residents of Thunder Lake informing them that the aerator is on.

Newman discussed the Squash Lake Meeting. This year Eurasian Water Milfoil has been producing rapidly. The DNR has been slow in accepting requests for herbicide applications. The Squash Lake District has private divers that hand pick the Eurasian Water Milfoil to remove it from the lake. A permit is needed for handpicking, but it is the preferred method because it is more effective and removes more than the DASH application. Almost 14,000 lbs. of Eurasian Water Milfoil have been removed from the lake this year. This was due to warmer weather causing a longer season.

Crescent Lake did not have an herbicide applied this year, which caused a major increase in the Eurasian Water Milfoil in that lake. A new pontoon boat is being requested and will be partially covered by grant money.

11. PFAs Update:

Chair Sorgel attended the Wisconsin Counties Association session. PFAs is a challenge everywhere and we are still waiting on funding.

Sadauskas met with DNR staff members, including a research scientist working heavily on the PFAs issue. LWCD had considered submitting a grant to work on the PFAs issue through monitoring lakes, but after the meeting, Sadauskas believes that the PFAs issue is outside the capacity of LWCD. The size of the grant that can be awarded would only allow small participation (testing three lakes) and Sadauskas believes that time and effort would better be served at a communicative level.

Chair Sorgel would like the Committee to continue to discuss updates and information gathered about PFAs moving forward.

12. Office Reports:

- a) Budget Actual.
- b) Invoices Paid.

Committee acknowledged and received agenda items 12a & 12b, as presented.

Sadauskas announced that the Executive Committee approved sending the \$2,500 request by Conservation Congress to the full County Board.

13. LWCD Items to Include on Next Agenda:

- Lake District Reports
- PFAs Update
- Office Reports
- AIS Update – S Boismenue.

14. Public Comment:

None.

15. Area 4 Extension Director Update – A. Rehberg.

- a) UWEX Status Update
 - i. Staffing and Communication Plan: Extension has a full staff at this time. The Health & Well Being Educator, Laurel Parins, has an appointment with the Aging & Disability Resource Center (ADRC) in concurrence with her appointment to Oneida County. The ADRC is required to have evidence-based programming and Laurel helps to facilitate those programs. This allows for more reach and capacity within the community to have greater impact, and eliminates duplication of services. It also allows for better use of resources.

The educators are creative and innovative in the ways they reach out to the community. Anne Williams writes a column for the Forest County Republican and is currently working on how to utilize those articles for Oneida County in order to widen the reach without duplication.

- ii. Nicolet Facilities & Partnership Update: At the budget meeting, the Executive Committee decreased the Extension Budget by \$13,000 in an attempt to receive a lower rent cost through Nicolet. The rental agreement is between Oneida County and Nicolet; Collette, Scott and Amber will meet with Nicolet to discuss the rent.

Chair Sorgel asked what the benefit of having a physical office would be, if the number of hours it is used is worth the rent costs. Without a physical location, Extension Oneida County will be limited in the services they offer to the community. Extension wants to be responsive to the needs of the community, but with limited resources, the reach is not as great. The partnership between Nicolet and Extension is beneficial, as it creates opportunities to bring experts into the programming. Anne Williams, Oneida County 4-H, started a LEGO Robotics program in different locations throughout Oneida County. The LEGO Robotics Club in Rhinelander has been visited by a few professors who shared their expertise and provided feedback to the youth. This partnership with local experts has strengthened the program, and has created an opportunity for the youth to connect with a resource in their community.

Jensen believes it is beneficial to have Extension connected to Nicolet, as it makes more sense to be associated with another educational institution rather than a local church. The move to another space should be transitional, as it is difficult to reduce rent costs by \$13,000 in such a small frame of time. The cost to move and the cost of set-up and IT needs to be taken into consideration too.

Chair Sorgel would like to know if services can be offered remotely or in a blended format.

Newman believes the negotiated price should be taken into consideration when seeking out alternative spaces. She does not believe it would be wise to have programming in churches, as it can create a certain doubt or connotation within the community.

Rehberg is working to find alternative spaces and is being creative about possible solutions.

- iii. 136 Contract for FY2025: The contract has been updated, there are no major changes from the previous contract. Approval of the contract is based on the budget passing. The contract needs to be signed by December. The choices are to sign the contract now and wait to submit until after the budget is fully approved, or wait until December to sign it.

Jensen noted that he appreciates that Oneida County is still receiving the educator discount of \$10,000.

Jensen/Newman made a motion to approve the 136 Contract for Fiscal Year 2025, as presented. All ayes; motion carried.

16. Programming/Educator Report – FoodWise – Allison Wilson & Mary Stys.

Allison Wilson gave an overview of the programming FoodWise provided to Oneida County residents this past year, including nutrition education at the Rhinelander Area Food Pantry (RAFP) garden, at the Hodag Food Wagon, facilitating a StrongBodies Class at Rhine Haus, leading and facilitating a Teen Cooking class at the YMCA of the Northwoods, and providing nutrition education lessons at local schools. FoodWise also organized the Food Pantry Network, which invited food pantries in Oneida County, and other surrounding areas, to connect. The Food Pantry Network provides the opportunity for food pantry directors to network, opening up the discussion and providing a space to share knowledge and successes, along with an opportunity to solve problems and issues. FoodWise attended a couple of community events this year, including Healthy Kids Day at the YMCA and the Harvest Hoedown. At the Harvest Hoedown, attendees were introduced to the Smoothie-Bike, an invention that allows an individual to blend their smoothie by pedaling the wheels of a bicycle. Participants had fun making their own smoothies using fruits and vegetables.

Looking ahead, FoodWise will be working with the RAFP to create an Oneida County Food Resource Guide that will be shared with schools and other agencies. This guide will help families and individuals locate sources to purchase healthy food options. Also, FoodWise is looking to collaborate with other low-income housing units to provide programming similar to what was provided to Rhine Haus. The Marshfield Clinic Health System was awarded a grant and FoodWise is working with them to organize the use of the money. An Oneida County Nutrition Coalition is in the process of being formed at this time.

Mary Stys led the CUW Committee in a hands-on activity that is used in 4th grade classrooms, and focuses on the nutrition of different plant parts.

17. UWEX Office Reports

- a) Budget Actual.
- b) Invoices Paid

Committee acknowledged and received agenda items 17a & 17b, as presented.

18. UWEX Items to Include on Next Agenda:

- Rent Negotiation Update

17. Adjournment: Chair Sorgel adjourned meeting at 2:29 p.m.

Respectfully Submitted,
Jessica Young, Recording Secretary

Committee Officers:

Collette Sorgel, Chair
Linnaea Newman, Vice Chair



Committee Members:

Robb Jensen
Lenore Lopez
Chris Schultz
John Engel, FSA
Representative

Conservation & UWEX Education Committee
Oneida County Courthouse
1 South Oneida Avenue
P O Box 400
Rhineland, Wisconsin 54501
www.oclw.org

September 17, 2024

Planning and Development Committee
Scott Holewinski, Chair

Gentlemen:

The Conservation & UWEX Education (CUW) Committee has received comments from both staff and citizens pertaining to the allowance of clearcutting in SPO 9.95B "Activities Allowed within the Vegetative Buffer Zone". This loss of tree cover, especially the loss of large mature trees, can have negative effects on water quality, aesthetics, and shoreland habitat. To suitably "protect water quality, fish and wildlife habitat, natural scenic beauty, and to promote preservation and restoration of native vegetation" as written in NR 115, the CUW Committee recommends the following revision to the current Shoreland Protection Ordinance:

- 9.95B 2. The county may allow select cutting removal of trees and shrubs in the vegetative buffer zone to create access and viewing corridors. Per s. 59.692(1f)(b), Wis. Stats. The minimum vegetation density for trees shall be maintained at 1 tree per 200 sq. ft., evenly spaced with a minimum 4" diameter at breast height (DBH). The viewing corridor may be at least 35 feet wide for every 100 feet of shoreline frontage. The viewing corridor may run contiguously for the entire maximum width of shoreline frontage owned.

In addition, the CUW Committee recommends that clearly defined mitigation strategies be established to help staff implement 9.96 "Shoreland Mitigation Plan". Presently, no such guidance is in place. The Committee recommends the following language be added after "to the fullest practicable extent possible" in 9.96C, 9.96D7, and 9.96D9:

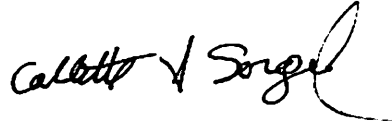
- with effective erosion and sediment control. In addition, the minimum vegetation density for trees shall be 1 per 200 sq. ft. evenly spaced with a minimum one inch (1") diameter, subject to provisions of 9.95. The minimum vegetation density for shrubs shall be 3 per 200 sq. ft. evenly spaced, subject to the provisions of section 9.95.

By adding the above revisions to the Shoreland Protection Ordinance, Oneida County can better prevent erosion or stormwater runoff issues before they occur, and if mitigation is needed or violations occur, both P&Z staff and the Planning & Development Committee will be better equipped to restore affected

landscapes. Both Land & Water Conservation staff and/or CUW Committee members would be happy to further discuss these recommendations in a future P&D Committee meeting.

Thank you for your time and consideration.

Sincerely,

A handwritten signature in black ink that reads "Collette Sorgel". The signature is written in a cursive style with a large, sweeping flourish at the end.

Collette Sorgel, Chair
Conservation and UW-Extension Education (CUW) Committee

cc: Karl Jennrich, Director, Planning & Zoning
Todd Troskey, Assistant Director, Planning & Zoning
Michele Sadauskas, County Conservationist, Oneida County LWCD

Committee Officers:

Collette Sorgel, Chair
Linnaea Newman, Vice Chair



Committee Members:

Robb Jensen
Lenore Lopez
Chris Schultz
John Engel, Farmer
Representative

Conservation & UWEX Education Committee
Oneida County Courthouse
1 South Oneida Avenue
P O Box 400
Rhineland, Wisconsin 54501
www.oclw.org

August 16, 2024

Planning and Development Committee
Scott Holewinski, Chair

Re: 2024 Oneida County Comprehensive Plan

Gentlemen:

The Conservation & UWEX Education (CUW) Committee has heard public comment, reviewed Land & Water Conservation staff recommendations, and studied Chapter 2 Draft 10 of the Oneida County Comprehensive Plan. The following changes are recommended:

- Page 2-7, Line 1.areas may contain algae and increased aquatic plant growth weeds.
- Page 2-7, Line 6. Below is a summary of surface water totals from the Oneida County Land and Water Conservation Department Information Office.
- Page 2-7, Table. 278 ponds lakes are between 10 and 50 acres
125 ponds lakes are between 5 and 10 acres
135 ponds lakes are between 2.6 and 5 acres
365 ponds lakes are between .01 acres and 2.5 acres

By using the word pond, Oneida County introduces another layer of terminology. There is no ecological basis for this breakdown and it will create confusion when communicating with the public. In general, the word 'pond' is used to describe an artificial waterbody. Oneida and Vilas counties are unique worldwide in the number of natural lakes we have. We should not diminish that uniqueness, nor label them incorrectly. An alternate recommendation would be to list: "903 lakes are smaller than 50 acres", in place of the above breakdowns.

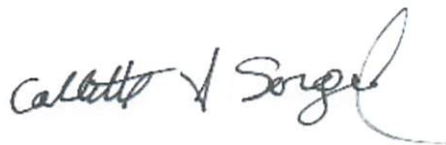
- Page 2-23, 4th paragraph. Private landowners may participate in the Managed Forest Law (MFL) program or engage in some other form of formalized forest management practices, such as the tree farm programs sponsored by the paper companies, or ensure the preservation and health of the County's woodland resources and wildlife habitat and not permanent easements acquired using federal, state, or local tax dollars that will take away tax base.
Recommend this section be listed in 'Land Use' segment of plan. It does not describe the natural resources of Oneida County, and should not be included in Chapter 2. In addition, is it appropriate for Oneida County to say citizens "may" participate in MFL, but "not" participate in permanent easements in a planning document? Recommend P&D develop different language.

- Page 2-28, Goal 2 Policy. ~~Discourage the conversion of existing privately owned lands to public lands using federal, state, and local tax dollars to purchase existing MFL lands or purchase easements over them.~~ “Improve forestry management to promote productivity of forest products, protect wildlife habitat, water quality, and provide recreational opportunities” (2013 policy). If Committee opts to keep new language, it is recommended that it be placed under the ‘Land Use’ segment with clearer language.
- Page 2-29, Goal 3 Policies, 4th bullet point. ~~Address erosion through sound erosion control methods, mechanisms and retaining walls, etc.~~
- Page 2-29, Goal 4. Add policy. Increase awareness of corridors and landscape connectivity and encourage retention of a natural area network connecting open areas, wetlands, and woodlands. This is an activity in the 2020-2029 Oneida County Land & Water Resource Management Plan.
- Page 2-30, Goal 6. ~~Allow metallic mining through the County’s metallic mining exploration, bulk sampling, and mining ordinance while prioritizing natural resources, and the interest and safety balancing safety, conservation, and the interests of County residents and landowners to~~ while complying with state laws.

Both Land & Water Conservation staff and CUW Committee members would be happy to further discuss these recommendations at a future P&D Committee meeting.

Thank you for your time and consideration.

Sincerely,



Collette Sorgel, Chair
Conservation and UW-Extension Education (CUW) Committee

cc: Karl Jennrich, Director, Planning & Zoning
Todd Troskey, Assistant Director, Planning & Zoning
Michele Sadauskas, County Conservationist, Oneida County LWCD

Excerpted from 31-page document –

GLTPA Oneida County Land Use Plan Comments
Mr. Karl Jennrich
Oneida County Conservation, Planning and Zoning Director
P.O. Box 400
Rhineland WI 54501

Dear Mr. Jennrich,
Please accept the following comments regarding the 2024 Oneida County Comprehensive Land Use Plan.
If you have any questions, please do not hesitate to contact me at 715-304-2861

Thank you,
Henry Schienebeck
Executive Director
Great Lakes Timber Professionals Association
Rhineland WI 54501

CHAPTER 2: NATURAL, AGRICULTURAL, & CULTURAL RESOURCES**Goals, Objectives, and Policies****GOAL 1:**

Current Draft: Look for opportunities to improve (incremental improvement) as science and technology develops to conserve and enhance the County's natural features, including lakes, rivers and streams, open space, wetlands, wildlife habitat, woodlands, and unique physical areas. This must be done in an approach that balances economic and environmental concerns between the natural and human environments.

SUGGESTED NEW:

The management of natural, agricultural, and cultural resources shall be accomplished in a way that both guarantees multiple uses of the county's most important natural resources—sensitive lakes, rivers, and streams; as well as stewardship of critical wetlands, open space, wildlife habitat, woodlands, and unique physical areas—and equally protects private property rights and ensures requisite space for economic development.

The long-term needs of future generations for renewable and non-renewable resources must be considered in any land-use plan. To achieve this goal, the county shall pursue and guarantee appropriate multiple uses of land, including but not limited to recreation, timber harvesting and forest management, metallic and nonmetallic mining, fish and wildlife activities, and agricultural production, as well as conservation. Multiple uses of land must be employed in a way that equally satisfies the economic and stewardship needs of the

people of Oneida County, while preserving flexibility for future adjustments to account for changing conditions and encourage state and federal governments to do the same.

Oneida County recognizes that the county's forests are one of the county's most important natural resources and must be managed for the benefit of county residents and taxpayers. The county shall maintain control, management, and ownership of county forestlands above any entity, government or otherwise, that would endanger local control or state sovereignty in the pursuit of state or international agendas.

Comment: It is critical throughout the plan to elevate economic development and preservation of private property rights to equal status with stewardship of the environment. The term "balancing," which is used throughout this section of the current draft, does not get us there. The goal is to remove the bias against development in land-use plans.

Objectives:

Current Draft: Promote development that considers and takes reasonable economic measures to reduce the impact on natural resources, considering property rights while balancing the human and natural environments.

SUGGESTED: Promote development consistent with a primary goal of local control and maintaining and assuring future economic viability, guided by the principles of multiple use and preservation of private property rights, while minimizing impacts on natural, agricultural and cultural resources.

COMMENT: The current draft is gobbledeygook. Once again, private property rights must be central, not merely "considered" and "balanced" against the environmental.

Current draft: Promote opportunities that consider both natural resource protection and economic development allowing for economic decisions in which the risk to the environment is calculated, minimized and controlled to benefit the economic decision.

SUGGESTED: The county shall identify and balance those industrial, agricultural/forestry, and tourism opportunities that can best maximize economic benefits and assure wise stewardship of the environment.

Current draft: Balance resource protection efforts with the requirements of human life and economics and identify and enhance the resources to provide economic returns to the county.

SUGGESTED: The county shall manage its natural resources in a way that is designed to maximize economic returns to the county.

POLICIES

SUGGESTED NEW: Require cost benefit analysis for all major conservation projects on public/easement lands, including for forest management plans. Oneida County will evaluate and determine the cost benefit analysis of any and all guidance, executive action, or mandated action offered by any agency, state and federal, governor or president, before initiating any action pursuant to the action requested, to be approved by the county and paid for by the requesting party.

Current draft: Slow the spread of invasive species.

As is

Current draft: Examine the impacts of metallic or nonmetallic mining on the County's natural resources.

Suggest eliminating as it is covered below

Current draft: Conserve and enhance shoreland areas by minimizing impacts from land disturbing activities

SUGGESTED: Shoreland restrictions can impair property rights and harm the local economy. All proposed shoreland policy shall be coordinated with the county and be consistent with the county comprehensive plan. County shoreland regulations cannot be more restrictive than state law and administrative code.

COMMENT: This current draft is unsettling because the state has long wanted to impose strict regulations, such as impervious surface caps, on all "shoreland" properties, including many that are not on the water. This language would open up the possibility of supporting more rather than less regulatory control over such as activities as landscaping—which is what the county is actually fighting against in its current ordinance revision.

GOAL 2

Conserve and enhance Managed Forest Law (MFL) Lands

Suggested New: Encourage the state of Wisconsin to review the state Managed Forest Law (MFL) program.

Objective:

Current: Minimize the conversion of woodlands into other uses

Suggested: Minimize the conversion of forestland and woodlands into other uses and prioritize forest management and timber production on all such public lands.

Policies:

Current draft: Discourage the conversion of existing privately owned lands to public lands using federal, state, and local tax dollars to purchase existing MFL lands or purchase easements over them.

SUGGESTED NEW: Oneida County discourages the use of the MFL program in conservation easements. The two programs are inconsistent or at odds in their duration. The MFL program contracts are 25 or 50 years whereas conservation easements are established into perpetuity. The MFL program provides a mechanism for leaving the program. Reducing the tax base in perpetuity is antithetical to the interests of county residents and gives up local control.

SUGGESTED NEW: All land uses within the jurisdiction of Oneida County shall be coordinated with the county comprehensive plan, regardless of ownership.

SUGGESTED NEW: Require the management for multiple uses of woodlands and forestlands on public land to emphasize timber production and forest management as the top priority—producing products and services from working forests, including timber and other forest commodities—with secondary priorities including aesthetics, cultural, recreational, and other ecological values.

Require specific definitions of working forests in public land management plans. Require plans to state the expected volume of wood to be produced from forests, and establish specific harvest requirements on easement lands similar to the small MFL landowner program.

SUGGESTED NEW: Forest management practices should use multiple-use forest principles.

SUGGESTED NEW: In crafting land use plans for wildlife habitats, include specific goals for balance between game versus non-game species.

SUGGESTED NEW: Define forested lands as agricultural lands for legal purposes and impose the constitutional requirement for agricultural lands that all leases of such land should be 15 years or less.

NO CHANGES TO GOAL THREE

Goal 3: Reduce contamination of surface and groundwater resources in the County.

Objectives :

Promote development that considers surface and groundwater impacts from onsite septic systems and other sources.

Conserve and enhance surface water, groundwater, and shoreline buffer zone quality.

Policies:

Promote groundwater protection efforts to maintain and lower nitrate, pesticide, and volatile compound pollution.

Identify and assess the current drainage system in the County.

Support dam/drainage way repair to minimize flooding in the County. Maintain all dams in the county.

Address erosion through sound erosion control mechanisms and retaining walls, etc.

Promote prevention of PFAS in groundwater including efforts to facilitate remediation of both water and soil.

GOAL 4

Goal 4: Encourage and support the conservation of natural areas that minimize flooding, such as grasslands, wetlands, and woodlands.

As is

Objective:

Increase and improve wildlife habitat.

As is

Policy:

New: Coordinate with FEMA to update floodplain maps with new technology.

New: All floodplain maps shall be updated in coordination with the county.

GOAL 5

Current draft: Allow for needed nonmetallic mining while balancing the interests of adjacent landowners and the county.

NO CHANGE

Objective :

Current draft: Minimize impacts to the county's natural resources from nonmetallic mining.

SUGGESTED NEW: Consider impacts to the county's natural resources from nonmetallic mining

Comment: Change "minimize" to "consider"

Policy:

Promote proper reclamation techniques in the County.

NO CHANGE

GOAL 6

Current draft: Allow for necessary metallic mining through the County's non-metallic mining and metallic mining exploration, bulk sampling, and mining ordinance while balancing the interest of county residents to comply with state laws.

SUGGESTED NEW: Pursue metallic mining through the county's non-metallic mining and metallic mining exploration, bulk sampling, and mining ordinance while complying with state laws and balancing any projects with the interests of county residents.

Objective :

Current draft: Minimize impacts to the county's natural resources from metallic mining.

SUGGESTED NEW: Pursue appropriate mining projects while minimizing impacts to the county's natural resources as much as possible.

Policy:

Promote proper reclamation techniques in the county

NO CHANGE

GOAL 7

Current draft: Work with all state and federal agencies with a presence in Oneida County regarding all state and federally owned land planning activities.

SUGGESTED NEW: Coordinate with all state and federal agencies with a presence in Oneida County regarding all state and federally owned land planning activities.

Suggested new: All state and federal agencies and lands utilizing federal money shall coordinate with Oneida County's comprehensive plan for all land planning and management activities on state and federal lands within the jurisdiction of the county, to ensure consistent and harmonized policies across the three levels of government.

Objective:

Current draft: County government should be aware of any proposed changes to state and federal lands and lands utilizing federal or state funding within Oneida County

SUGGESTED NEW: Notification, consultation, and coordination with the county is required at the earliest time possible for any land planning and/or proposed action by state and/or federal agencies, or nonprofit organizations, or for any change in existing activities, newly permitted activities, or changes in regulations that may affect the economic basis of the county. Consultation and coordination with the county is necessary to determine the full scope of potential social and economic effects of proposed activities. The county considers that consultation and coordination must include all impacted towns on all forest management issues.

Policies:

Current draft: County staff and/or elected officials shall coordinate and attend planning meetings or similar activities to ensure that the county has a voice regarding state and federally owned land issues. The County Forestry Land & Recreation Committee shall assign qualified staff to attend state and federal planning meetings or similar activities to ensure that the county has an informed voice when regarding input on these issues.

SUGGESTED NEW: Oneida County requires that all federal and state agencies and lands utilizing federal, or state funding coordinate any land use activities with the county and impacted towns, in compliance with applicable federal and state laws and purposes of those laws with the county.

SUGGESTED NEW: The county will establish a Resource Advisory/Coordination Committee to monitor land use activities that would require coordination with the county to ensure timely notification, and to alert the county to issues requiring coordination. Elected officials and/or designated county staff shall attend state and federal planning meetings or similar activities to ensure that county policies are being properly considered in the state and federal planning processes.

GOALS 8 AND 9 UNCHANGED

2016 Wisconsin Statutes & Annotations

82. Town highways.

82.10 Initiation of procedures.

Universal Citation: [WI Stat § 82.10 \(2016\)](#)

82.10 Initiation of procedures.

82.10(1) (1) Application for highway changes. Six or more resident freeholders may apply to the town board to have a highway laid out, altered, or discontinued. The application shall be in writing and shall be delivered to the town clerk. The application shall contain all of the following:

82.10(1)(a) (a) A legal description of the highway to be discontinued or of the proposed highway to be laid out or altered.

82.10(1)(b) (b) A scale map of the land that would be affected by the application.

82.10(2) (2) Resolution. Notwithstanding sub. (1), the town board may initiate the process of laying out, altering, or discontinuing a town highway by the introduction of a resolution. The resolution shall contain all of the following:

82.10(2)(a) (a) A legal description of the highway to be discontinued or of the proposed highway to be laid out or altered.

82.10(2)(b) (b) A scale map of the land that would be affected by the resolution.

82.10(3) (3) Notice requirements. Upon receipt of an application under sub. (1) or the introduction of a resolution under sub. (2), the board shall provide notice of the time that and the place where it will meet to consider the application or resolution. The notice shall contain a legal description of the highway to be discontinued or of the proposed highway to be laid out or altered and a scale map of the land that would be affected by the application or resolution.

82.10(4) (4) Notice recipients.

82.10(4)(a)(a) The town board or, at the town board's direction, the applicants shall publish a class 3 notice under ch. 985 and shall, at least 30 days before the hearing, give notice by registered mail to all of the following:

82.10(4)(a)1. 1. The owners of record of lands through which the highway may pass.

82.10(4)(a)2. 2. The owners of record of all lands abutting the highway.

82.10(4)(a)3. 3. The department of natural resources.

82.10(4)(a)4. 4. The county land conservation committee in each county through which the highway may pass.

82.10(4)(a)5. 5. The secretary of transportation, if the highway that is the subject of the application or resolution is located within one-quarter mile of a state trunk highway or connecting highway.

82.10(4)(a)6. 6. The commissioner of railroads, if there is a railroad highway crossing, within the portion of the highway that is the subject of the application or resolution.

82.10(4)(b) (b) If procedures are begun under sub. (1), the applicants shall bear the cost of publication. If the procedures are begun under sub. (2), the town shall bear the cost of publication.

82.10(5) (5) Lis pendens. In the case of an application under sub. (1), the applicant shall file a lis pendens under s. 840.11. In the case of a resolution under sub. (2), the board shall file a lis pendens within 10 days of the introduction of the resolution.

History: 2003 a. 214 ss. 29, 34 to 38, 161; 2009 a. 107, 223.

NOTE: 2003 Wis. Act 214, which affected this section, contains extensive explanatory notes.

STATE OF WISCONSIN

TOWN OF MINOCQUA

ONEIDA COUNTY

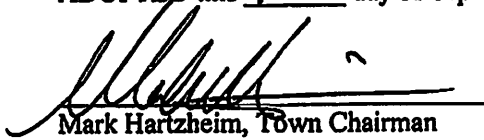
RESOLUTION TO INITIATE PROCESS FOR ALTERING A HIGHWAY

The Town Board of the Town of Minocqua, Oneida County, Wisconsin, by this Resolution, adopted by a majority of the Town Board on a roll call vote, with a quorum present and voting and proper notice having been given resolves and orders as follows:

The process under Chapter 82 Wis. Stats. to alter a highway in the Town described as follows is hereby initiated: all that part of Hassler Drive created by maintenance and use extending from platted Hassler Drive to parcel M1-7523, Chicago Avenue Condominiums, located in Government Lots 5 and 6, Section 14, T39N, R6E, Town of Minocqua, Oneida County, Wisconsin.

A scale map of the land that will be affected by this application is attached and on file with the Town Clerk.

ADOPTED this 1st day of October, 2024.

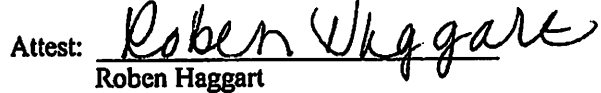

Mark Hartzheim, Town Chairman


Susan Heil, Supervisor


Erika Peterson, Supervisor


Billy Fricke, Supervisor


Brian Fricke, Supervisor

Attest: 
Roben Haggart

Notice of Meeting of Supervisors to Consider Altering a Highway

State of Wisconsin
Town of Minocqua
Oneida County

A resolution having been adopted by the supervisors of the Town of Minocqua, Oneida County, Wisconsin to initiate the process of altering a highway generally described as follows:

That portion of Hassler Drive extending from platted Hassler Drive to the Chicago Avenue Condominiums located in Government Lots 5 and 6, Section 14, T39N, R6E, Town of Minocqua, Oneida County, Wisconsin.

A scale map and specific description of the land that will be affected by this Resolution is on file with the Clerk.

Notice is hereby given that the supervisors of the Town will meet on November 19, 2024 at 4:45 o'clock of that day at the Minocqua Town Hall to consider and decide upon the Resolution.

Adopted this 1st day of October, 2024.

/s/ Roben Haggart
Roben Haggart, Town Clerk

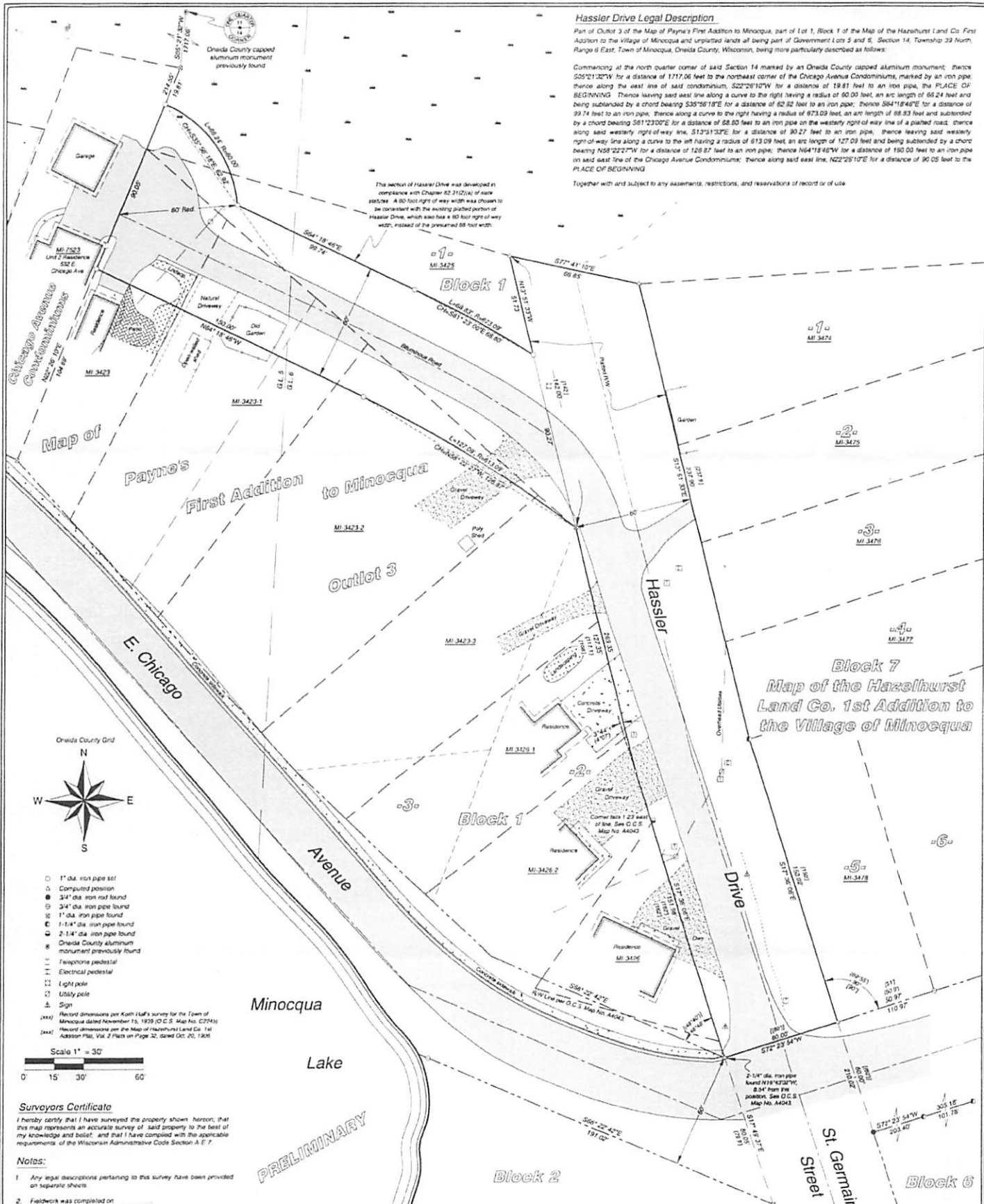
Hassler Drive Legal Description

Part of Outlot 3 of the Map of Payne's First Addition to Minocqua, part of Lot 1, Block 1 of the Map of the Hazlhurst Land Co. First Addition to the Village of Minocqua and Unplatted lands all being part of Government Lots 5 and 6, Section 14, Township 33 North, Range 6 East, Town of Minocqua, Oneida County, Wisconsin, being more particularly described as follows:

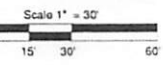
Commencing at the north quarter corner of said Section 14 marked by an Oneida County capped aluminum monument, thence S55°21'02"W for a distance of 1717.06 feet to the northeast corner of the Chicago Avenue Condominiums, marked by an iron pipe, thence along the east line of said condominium, S22°26'10"W for a distance of 19.81 feet to an iron pipe, the PLACE OF BEGINNING. Thence leaving said east line along a curve to the right having a radius of 60.00 feet, an arc length of 65.24 feet and being subtended by a chord bearing S35°56'18"E for a distance of 62.92 feet to an iron pipe, thence S64°18'46"E for a distance of 39.74 feet to an iron pipe, thence along a curve to the right having a radius of 673.09 feet, an arc length of 68.83 feet and subtended by a chord bearing S51°22'02"E for a distance of 58.50 feet to an iron pipe on the westerly right-of-way line of a platted road, thence along said westerly right-of-way line, S13°31'13"E for a distance of 30.27 feet to an iron pipe, thence leaving said westerly right-of-way line along a curve to the left having a radius of 613.09 feet, an arc length of 127.09 feet and being subtended by a chord bearing N58°22'27"W for a distance of 120.87 feet to an iron pipe, thence N64°18'46"W for a distance of 190.00 feet to an iron pipe on said east line of the Chicago Avenue Condominiums, thence along said east line, N22°25'10"E for a distance of 90.05 feet to the PLACE OF BEGINNING.

Together with and subject to any assessments, restrictions, and reservations of record or of use.

The section of Hassler Drive was developed in compliance with Chapter 62.31(2)(a) of state statute. A 60-foot right-of-way width was chosen to be consistent with the existing platted portion of Hassler Drive, which also has a 60-foot right-of-way width, instead of the presumed 65-foot width.



- 1" dia. iron pipe set
- Computed position
- 3/4" dia. iron rod found
- 3/4" dia. iron pipe found
- 1" dia. iron pipe found
- 1-1/4" dia. iron pipe found
- 2-1/4" dia. iron pipe found
- Oneida County aluminum monument previously found
- ⊕ Telephone pedestal
- ⊕ Electrical pedestal
- ⊕ Light pole
- ⊕ Utility pole
- ⊕ Sign



Surveyors Certificate
 I hereby certify that I have surveyed the property shown hereon, that this map represents an accurate survey of said property to the best of my knowledge and belief, and that I have complied with the applicable requirements of the Wisconsin Administrative Code Section A. E. 7.

Notes:
 1. Any legal descriptions pertaining to this survey have been provided on separate sheets.
 2. Fieldwork was completed on _____

PRELIMINARY

SHEET 1 OF 1

Hassler Drive Right-of-Way
 Being part of Government Lots 5 & 6
 Section 14, T 39 N, R 6 E
 Town of Minocqua
 Oneida County, Wisconsin

PREPARED FOR:
 Town of Minocqua

Arbor Vitae, WI 54568
 Phone 715.356.9485

Eagle River, WI 54521
 Phone 715.479.2570

www.mainesandassociates.com

End.GLPeriod 1023 AND [Report].FormattedAccountNumber 101.50.50000.000000{-}101.50.59999.999999

Account Number	Account Title	YTD	Budget	Variance	% Budget
Fund101 - GENERAL FUND					
101.50.56140.511101	SALARIES-PERM EMPLOYEE(E)	57,518.79	72,976.00	15,457.21	78.81%
101.50.56140.511102	WAGES-PERM EMPLOYEE(E)	.00	.00	.00	100.00%
101.50.56140.511103	OVERTIME WAGES(E)	.00	.00	.00	100.00%
101.50.56140.511104	WAGES-PART-TIME EMPLOYEE(E)	.00	.00	.00	100.00%
101.50.56140.511105	WAGES-LIMITED TERM EMPLOYEE(E)	36,529.15	53,316.00	16,786.85	68.51%
101.50.56140.512001	SOCIAL SECURITY(E)	6,967.13	9,544.00	2,576.87	73.00%
101.50.56140.512002	RETIREMENT-EMPLOYER'S SHARE(E)	3,911.36	4,964.00	1,052.64	78.79%
101.50.56140.512004	HEALTH/DENTAL INSURANCE(E)	9,530.03	10,660.00	1,129.97	89.39%
101.50.56140.512005	LIFE INSURANCE(E)	168.45	212.00	43.55	79.45%
101.50.56140.512006	WORKER'S COMPENSATION(E)	2,115.35	3,373.00	1,257.65	62.71%
101.50.56140.512007	INCOME CONTINUATION INS(E)	.00	106.00	106.00	0.00%
101.50.56140.512008	UNEMPLOYMENT COMPENSATION(E)	.00	.00	.00	100.00%
101.50.56140.513901	COST ALLOC-VACANCY/REDUCTION(E)	.00	.00	.00	100.00%
101.50.56140.521901	OTHER PROFESSIONAL SERVIC(E)	.00	.00	.00	100.00%
101.50.56140.522005	TELEPHONE AND FAX(E)	996.06	1,186.00	189.94	83.98%
101.50.56140.523205	SOFTWARE MAINTENANCE(E)	.00	.00	.00	100.00%
101.50.56140.523295	INFO TECH SUBSCRIPTION(E)	.00	.00	.00	100.00%
101.50.56140.523323	REPAIR OF RENTAL EQUIPMENT(E)	.00	200.00	200.00	0.00%
101.50.56140.531101	POSTAGE AND BOX RENT(E)	92.00	150.00	58.00	61.33%
101.50.56140.531102	PRINTING AND DUPLICATION(E)	3.46	100.00	96.54	3.46%
101.50.56140.531103	CENTRAL PURCHASING(E)	366.96	800.00	433.04	45.87%
101.50.56140.531203	MEMBERSHIP DUES(E)	2,162.00	2,500.00	338.00	86.48%
101.50.56140.531204	ADVERTISING(E)	.00	50.00	50.00	0.00%
101.50.56140.531301	TRAINING/CONFERENCE FEES(E)	857.00	1,700.00	843.00	50.41%

End.GLPeriod 1023 AND [Report].FormattedAccountNumber 101.50.50000.000000{-}101.50.59999.999999

Account Number	Account Title	YTD	Budget	Variance	% Budget
101.50.56140.531302	EMPLOYEE AUTO ALLOWANCE(E)	1,929.43	4,214.00	2,284.57	45.78%
101.50.56140.531304	MEALS-TAXABLE(E)	.00	.00	.00	100.00%
101.50.56140.531305	MEALS LODGING & MISC TRAVEL(E)	492.00	800.00	308.00	61.50%
101.50.56140.531406	EDUCATIONAL SUPPLIES(E)	1,091.58	3,450.00	2,358.42	31.64%
101.50.56140.531451	ANCHOR CHAIN SCARIFIRE(E)	.00	.00	.00	100.00%
101.50.56140.531453	WORKSHOPS/PROGRAMS(E)	.00	.00	.00	100.00%
101.50.56140.531482	LAND & WATER PLAN IMPLEMENTA(E)	38,168.85	70,500.00	32,331.15	54.14%
101.50.56140.531703	EQUIPMENT RENTAL(E)	.00	.00	.00	100.00%
101.50.56140.531901	OTHER SUPPLIES & EXPENSES(E)	2,226.30	3,138.00	911.70	70.94%
101.50.56140.581216	GRANT TO CONSERVATION CONGRESS(E)	.00	.00	.00	100.00%
101.50.56140.582001	PRIZES AND AWARDS(E)	3,118.78	3,258.00	139.22	95.72%
101.50.56140.583001	BAD DEBT EXPENSES(E)	.00	.00	.00	100.00%
101.50.56140.583200	SUBSCRIPTION CLEAR - CHG ACCTG(E)	.00	.00	.00	100.00%
101.50.56142.511102	WAGES-PERM EMPLOYEE(E)	.00	.00	.00	100.00%
101.50.56142.511105	WAGES-LIMITED TERM EMPLOYEE(E)	.00	293.00	293.00	0.00%
101.50.56142.512001	SOCIAL SECURITY(E)	.00	23.00	23.00	0.00%
101.50.56142.512005	LIFE INSURANCE(E)	37.80	46.35	8.55	81.55%
101.50.56142.512006	WORKER'S COMPENSATION(E)	.00	1.00	1.00	0.00%
101.50.56142.521901	OTHER PROFESSIONAL SERVICES(E)	16,366.17	25,444.00	9,077.83	64.32%
101.50.56142.531101	POSTAGE AND BOX RENT(E)	.00	2.00	2.00	0.00%
101.50.56142.531102	PRINTING AND DUPLICATION(E)	.00	2.00	2.00	0.00%
101.50.56142.531302	EMPLOYEE AUTO ALLOWANCE(E)	3,388.85	4,015.42	626.57	84.39%
101.50.56142.531473	ABATEMENT EXPENSES(E)	.00	12,048.23	12,048.23	0.00%
101.50.56142.531483	DEER PROCESSING(E)	.00	1,650.00	1,650.00	0.00%
101.50.56144.511102	WAGES-PERM EMPLOYEE(E)	46,417.38	58,484.00	12,066.62	79.36%

End.GLPeriod 1023 AND [Report].FormattedAccountNumber 101.50.50000.000000{-}101.50.59999.999999

Account Number	Account Title	YTD	Budget	Variance	% Budget
101.50.56144.511103	OVERTIME WAGES(E)	.00	.00	.00	100.00%
101.50.56144.511105	WAGES-LIMITED TERM EMPLOYEE(E)	33,409.75	34,514.00	1,104.25	96.80%
101.50.56144.512001	SOCIAL SECURITY(E)	5,817.37	6,745.00	927.63	86.24%
101.50.56144.512002	RETIREMENT-EMPLOYER'S SHARE(E)	3,156.35	3,978.00	821.65	79.34%
101.50.56144.512004	HEALTH/DENTAL INSURANCE(E)	9,771.09	10,662.00	890.91	91.64%
101.50.56144.512005	LIFE INSURANCE(E)	196.95	238.00	41.05	82.75%
101.50.56144.512006	WORKER'S COMPENSATION(E)	2,131.40	2,622.00	490.60	81.28%
101.50.56144.512007	INCOME CONTINUATION INS(E)	.00	84.00	84.00	0.00%
101.50.56144.512008	UNEMPLOYMENT COMPENSATION(E)	.00	.00	.00	100.00%
101.50.56144.513901	COST ALLOC-VACANCY/REDUCTION(E)	.00	.00	.00	100.00%
101.50.56144.521901	OTHER PROFESSIONAL SERVICES(E)	.00	.00	.00	100.00%
101.50.56144.531101	POSTAGE AND BOX RENT(E)	179.18	300.00	120.82	59.72%
101.50.56144.531102	PRINTING AND DUPLICATION(E)	.00	.00	.00	100.00%
101.50.56144.531103	CENTRAL PURCHASING(E)	.00	.00	.00	100.00%
101.50.56144.531301	TRAINING/CONFERENCE FEES(E)	220.00	500.00	280.00	44.00%
101.50.56144.531302	EMPLOYEE AUTO ALLOWANCE(E)	1,872.58	3,806.00	1,933.42	49.20%
101.50.56144.531304	MEALS-TAXABLE(E)	.00	.00	.00	100.00%
101.50.56144.531305	MEALS LODGING & MISC TRAVEL(E)	235.98	334.00	98.02	70.65%
101.50.56144.531406	EDUCATIONAL SUPPLIES(E)	.00	.00	.00	100.00%
101.50.56144.531453	WORKSHOPS/PROGRAMS(E)	328.89	400.00	71.11	82.22%
101.50.56144.531701	RENTS AND LEASES(E)	.00	.00	.00	100.00%
101.50.56144.531703	EQUIPMENT RENTAL(E)	.00	.00	.00	100.00%
101.50.56144.531901	OTHER SUPPLIES & EXPENSES(E)	.00	.00	.00	100.00%
101.50.56144.582001	PRIZES AND AWARDS(E)	.00	245.00	245.00	0.00%
AccountTypeExpenditure		291,774.42	413,634.00	121,859.58	

End.GLPeriod 1023 AND [Report].FormattedAccountNumber 101.50.50000.000000{-}101.50.59999.999999

Account Number	Account Title	YTD	Budget	Variance	% Budget
101.50.56140.435801	STATE AID-CONSERVATION AIDS(R)	.00	-129,008.00	-129,008.00	0.00%
101.50.56140.435804	STATE AID-PLAN IMPLEMENTATIO(R)	.00	-70,500.00	-70,500.00	0.00%
101.50.56140.435813	STATE AID OTHER CONSERV GRAN(R)	-25,000.00	-38,301.00	-13,301.00	65.27%
101.50.56140.468104	PUBLIC CHGS-EQUIPMENT RENTAL(R)	-80.00	.00	80.00	100.00%
101.50.56140.468107	P/C-RESTORE/EROSION PLAN(R)	.00	.00	.00	100.00%
101.50.56140.468108	P/C-RESTORE/EROSION REVIEW(R)	.00	.00	.00	100.00%
101.50.56140.468200	PUBLIC CHGS-SOIL MAPS(R)	.00	.00	.00	100.00%
101.50.56140.468204	PUBLIC CHGS-FORFEIT DEPOSITS(R)	.00	.00	.00	100.00%
101.50.56140.473700	INTERGOV CHGS-LAND CONSERVAT(R)	.00	.00	.00	100.00%
101.50.56140.485100	DONATIONS(R)	-3,360.00	-2,478.00	882.00	135.59%
101.50.56140.485515	CONTRIBUTION-CONSERVATION(R)	.00	.00	.00	100.00%
101.50.56140.489150	REIMBURSEMENT OF EXPENDITURE(R)	.00	.00	.00	100.00%
101.50.56140.493028	APPL CONT APPR-SOIL MAPS(R)	.00	.00	.00	100.00%
101.50.56140.493097	APPL CONT APPR- L & W DNR ADV(R)	.00	.00	.00	100.00%
101.50.56142.435803	STATE AID-WILDLIFE DAMAGE(R)	.00	-43,525.00	-43,525.00	0.00%
101.50.56144.435812	STATE AID-AQUATIC INVASIVE(R)	-40,073.26	-40,303.00	-229.74	99.42%
101.50.56144.435813	0(R)	.00	.00	.00	100.00%
101.50.56144.468202	PUB CHGS-AQUATIC INVASIVE SP(R)	.00	.00	.00	100.00%
101.50.56144.485100	DONATIONS(R)	-2,000.00	-2,000.00	.00	100.00%
101.50.56144.489150	REIMBURSEMENT OF EXPENDITURE(R)	.00	.00	.00	100.00%
101.50.56144.493096	APPL CONT APPR-AIS PROGRAM(R)	.00	-2,870.00	-2,870.00	0.00%
AccountTypeRevenue		-70,513.26	-328,985.00	-258,471.74	
Fund101 - GENERAL FUND		221,261.16	84,649.00	-136,612.16	
Total:		221,261.16	84,649.00	-136,612.16	

Report Criteria:

Report type: Invoice detail
Invoice Detail.GL account (5 Characters) = "10150"

Description	Vendor Number	Input Date	Invoice Date	Invoice Number	Invoice GL Account	Invoice Amount	Check Issue Date	Check Number	Check Amount
AMAZON CAPITAL SERVICES									
AMAZON CALENDAR SUPPLIES	26975	09/30/2024	09/30/2024	13RD-QR7D-X96Y	101.50.56140.531901	38.08	10/10/2024	408824	38.08
AMAZON SUPPLIES CAMERA	26975	09/30/2024	09/30/2024	1FLK-MVKJ-WP7Q	101.50.56140.531901	27.29	10/10/2024	408824	27.29
Total AMAZON CAPITAL SERVICES:									65.37
CORPORATE PAYMENT SYSTEMS - FINC DEPT									
MICHELE SADAUSKAS X4604	29450	10/17/2024	10/15/2024	4715 1103 0365 8855 10.1	101.50.56140.531103	320.00	10/24/2024	409049	320.00
Total CORPORATE PAYMENT SYSTEMS - FINC DEPT:									320.00
USDA APHIS									
WDP FENCING/ABATEMENT	8617	10/07/2024	10/01/2024	3005134710	101.50.56142.531473	5,246.15	10/24/2024	409137	5,246.15
Total USDA APHIS:									5,246.15
Grand Totals:									5,631.52

Summary by General Ledger Account Number

GL Account	Debit	Credit	Proof
101.211100	.00	5,631.52-	5,631.52-
101.50.56140.531103	320.00	.00	320.00
101.50.56140.531901	65.37	.00	65.37
101.50.56142.521901	3,467.87	.00	3,467.87
101.50.56142.531302	1,473.22	.00	1,473.22
101.50.56142.531473	305.06	.00	305.06
Grand Totals:	5,631.52	5,631.52-	.00

End.GLPeriod 1024 AND [Report].FormattedAccountNumber 101.42.50000.000000{-}101.42.59999.999999

Account Number	Account Title	YTD	Budget	Variance	% Budget
Fund101 - GENERAL FUND					
101.42.55460.511105	WAGES-LIMITED TERM EMPLOYEE(E)	.00	.00	.00	100.00%
101.42.55460.512001	SOCIAL SECURITY(E)	.00	.00	.00	100.00%
101.42.55460.512006	WORKER'S COMPENSATION(E)	.00	.00	.00	100.00%
101.42.55460.512008	UNEMPLOYMENT COMPENSATION(E)	.00	.00	.00	100.00%
101.42.55460.521901	OTHER PROFESSIONAL SERVICES(E)	.00	.00	.00	100.00%
101.42.55460.522005	TELEPHONE AND FAX(E)	.00	.00	.00	100.00%
101.42.55460.531101	POSTAGE AND BOX RENT(E)	.00	.00	.00	100.00%
101.42.55460.531102	PRINTING AND DUPLICATION(E)	.00	.00	.00	100.00%
101.42.55460.531103	CENTRAL PURCHASING(E)	.00	.00	.00	100.00%
101.42.55460.531203	MEMBERSHIP DUES(E)	.00	.00	.00	100.00%
101.42.55460.531204	ADVERTISING(E)	.00	.00	.00	100.00%
101.42.55460.531290	OTHER PUBLICATIONS & SUBSCR(E)	.00	.00	.00	100.00%
101.42.55460.531301	TRAINING/CONFERENCE FEES(E)	.00	.00	.00	100.00%
101.42.55460.531302	EMPLOYEE AUTO ALLOWANCE(E)	.00	.00	.00	100.00%
101.42.55460.531304	MEALS-TAXABLE(E)	.00	.00	.00	100.00%
101.42.55460.531305	MEALS LODGING & MISC TRAVEL(E)	.00	.00	.00	100.00%
101.42.55460.531470	4-H SUPPLIES(E)	.00	.00	.00	100.00%
101.42.55460.531484	JUNIOR FAIR COMMITTEE(E)	.00	.00	.00	100.00%
101.42.55460.531701	RENTS AND LEASES(E)	.00	.00	.00	100.00%
101.42.55460.531901	OTHER SUPPLIES & EXPENSES(E)	.00	.00	.00	100.00%
101.42.55460.699009	OTHER CAPITAL EQUIPMENT(E)	.00	.00	.00	100.00%
101.42.55620.511102	WAGES-PERM EMPLOYEE(E)	43,953.60	54,120.00	10,166.40	81.21%
101.42.55620.511103	OVERTIME WAGES(E)	.00	.00	.00	100.00%
101.42.55620.511104	WAGES-PART-TIME EMPLOYEE(E)	.00	.00	.00	100.00%

End.GLPeriod 1024 AND [Report].FormattedAccountNumber 101.42.50000.000000{-}101.42.59999.999999

Account Number	Account Title	YTD	Budget	Variance	% Budget
101.42.55620.511105	WAGES-LIMITED TERM EMPLOYEE(E)	.00	.00	.00	100.00%
101.42.55620.511205	HOLIDAY WORKED PAY(E)	.00	.00	.00	100.00%
101.42.55620.512001	SOCIAL SECURITY(E)	3,534.47	4,140.00	605.53	85.37%
101.42.55620.512002	RETIREMENT-EMPLOYER'S SHARE(E)	3,032.84	3,680.00	647.16	82.41%
101.42.55620.512004	HEALTH/DENTAL INSURANCE(E)	.00	130.00	130.00	0.00%
101.42.55620.512005	LIFE INSURANCE(E)	84.14	150.00	65.86	56.09%
101.42.55620.512006	WORKER'S COMPENSATION(E)	61.55	70.00	8.45	87.92%
101.42.55620.512007	INCOME CONTINUATION INS(E)	.00	.00	.00	100.00%
101.42.55620.512008	UNEMPLOYMENT COMPENSATION(E)	.00	.00	.00	100.00%
101.42.55620.512018	CASH IN LIEU OF HEALTH INS(E)	2,500.00	3,000.00	500.00	83.33%
101.42.55620.513901	COST ALLOC-VACANCY/REDUCTION(E)	.00	.00	.00	100.00%
101.42.55620.521901	OTHER PROFESSIONAL SERVICES(E)	27,372.90	54,746.00	27,373.10	49.99%
101.42.55620.522005	TELEPHONE AND FAX(E)	1,987.87	2,300.00	312.13	86.42%
101.42.55620.523203	MACY AND EQUIP SVC CONTRACTS(E)	.00	500.00	500.00	0.00%
101.42.55620.523205	SOFTWARE MAINTENANCE(E)	.00	700.00	700.00	0.00%
101.42.55620.531101	POSTAGE AND BOX RENT(E)	934.82	1,500.00	565.18	62.32%
101.42.55620.531102	PRINTING AND DUPLICATION(E)	48.36	150.00	101.64	32.24%
101.42.55620.531103	CENTRAL PURCHASING(E)	1,491.75	1,000.00	-491.75	149.17%
101.42.55620.531202	SUBSCRIPTIONS(E)	66.00	150.00	84.00	44.00%
101.42.55620.531203	MEMBERSHIP DUES(E)	205.00	820.00	615.00	25.00%
101.42.55620.531301	TRAINING/CONFERENCE FEES(E)	350.00	1,100.00	750.00	31.81%
101.42.55620.531302	EMPLOYEE AUTO ALLOWANCE(E)	72.13	650.00	577.87	11.09%
101.42.55620.531304	MEALS-TAXABLE(E)	.00	.00	.00	100.00%
101.42.55620.531305	MEALS LODGING & MISC TRAVEL(E)	2,518.17	3,500.00	981.83	71.94%
101.42.55620.531406	EDUCATIONAL SUPPLIES(E)	169.64	450.00	280.36	37.69%

End.GLPeriod 1024 AND [Report].FormattedAccountNumber 101.42.50000.000000{-}101.42.59999.999999

Account Number	Account Title	YTD	Budget	Variance	% Budget
101.42.55620.531453	WORKSHOPS/PROGRAMS(E)	83.52	1,550.00	1,466.48	5.38%
101.42.55620.531470	4-H SUPPLIES(E)	478.42	500.00	21.58	95.68%
101.42.55620.531701	RENTS AND LEASES(E)	18,000.00	18,000.00	.00	100.00%
101.42.55620.583001	BAD DEBT EXPENSES(E)	.00	.00	.00	100.00%
101.42.55620.599910	REFUND PRIOR YR REVENUE(E)	.00	.00	.00	100.00%
101.42.55622.521901	OTHER PROFESSIONAL SERVIC(E)	.00	.00	.00	100.00%
AccountTypeExpenditure		106,945.18	152,906.00	45,960.82	
101.42.55460.435710	STATE AID-FAIR(R)	.00	.00	.00	100.00%
101.42.55460.467180	PUBLIC CHGS-FAIR(R)	.00	.00	.00	100.00%
101.42.55460.485100	DONATIONS(R)	.00	.00	.00	100.00%
101.42.55460.493087	APPL CONT APPR-FAIR(R)	.00	.00	.00	100.00%
101.42.55620.433100	FEDERAL GRANTS-CARES ACT(R)	.00	.00	.00	100.00%
101.42.55620.435720	STATE AID-UW-EXTENSION(R)	-1,350.00	-2,700.00	-1,350.00	50.00%
101.42.55620.467200	PUBLIC CHGS-PUBLICATIONS UWE(R)	.00	.00	.00	100.00%
101.42.55620.467210	PUBLIC CHGS-WORKSHOPS/PROGRA(R)	-359.60	-500.00	-140.40	71.92%
101.42.55620.493025	APPL CONT APPR-UWEX STATE(R)	.00	.00	.00	100.00%
AccountTypeRevenue		-1,709.60	-3,200.00	-1,490.40	
Fund101 - GENERAL FUND		105,235.58	149,706.00	44,470.42	
Total:		105,235.58	149,706.00	44,470.42	

Report Criteria:

Report type: Invoice detail
Invoice Detail.GL account (5 Characters) = "10142"

Description	Vendor Number	Input Date	Invoice Date	Invoice Number	Invoice GL Account	Invoice Amount	Check Issue Date	Check Number	Check Amount
CORPORATE PAYMENT SYSTEMS - FINC DEPT									
JESSICA YOUNG, X 9529	29450	10/17/2024	10/15/2024	4715 1103 0365 8855 10.1	101.42.55620.531103	669.64	10/24/2024	409049	669.64
Total CORPORATE PAYMENT SYSTEMS - FINC DEPT:									669.64
KRAUSE, SHARON L									
SEPTEMBER MILEAGE	29216	10/04/2024	10/04/2024	10.2024.29216	101.42.55620.531305	50.57	10/10/2024	408856	50.57
Total KRAUSE, SHARON L:									50.57
TRIGS RHINELANDER									
TEEN COURT TRAINING SNACKS	1515	10/03/2024	09/30/2024	00121422-132	101.42.55620.531453	50.03	10/10/2024	408894	50.03
Total TRIGS RHINELANDER:									50.03
WILLIAMS, ANNE									
PORGRAM SUPPLIES (SEPTEMBER)	28218	10/04/2024	10/04/2024	10.2024.28218	101.42.55620.531453	457.55	10/10/2024	408914	457.55
Total WILLIAMS, ANNE:									457.55
Grand Totals:									1,227.79

Summary by General Ledger Account Number

GL Account	Debit	Credit	Proof
101.211100	.00	1,227.79-	1,227.79-
101.42.55620.531103	669.64	.00	669.64
101.42.55620.531305	457.06	.00	457.06
101.42.55620.531453	101.09	.00	101.09
Grand Totals:	1,227.79	1,227.79-	.00