

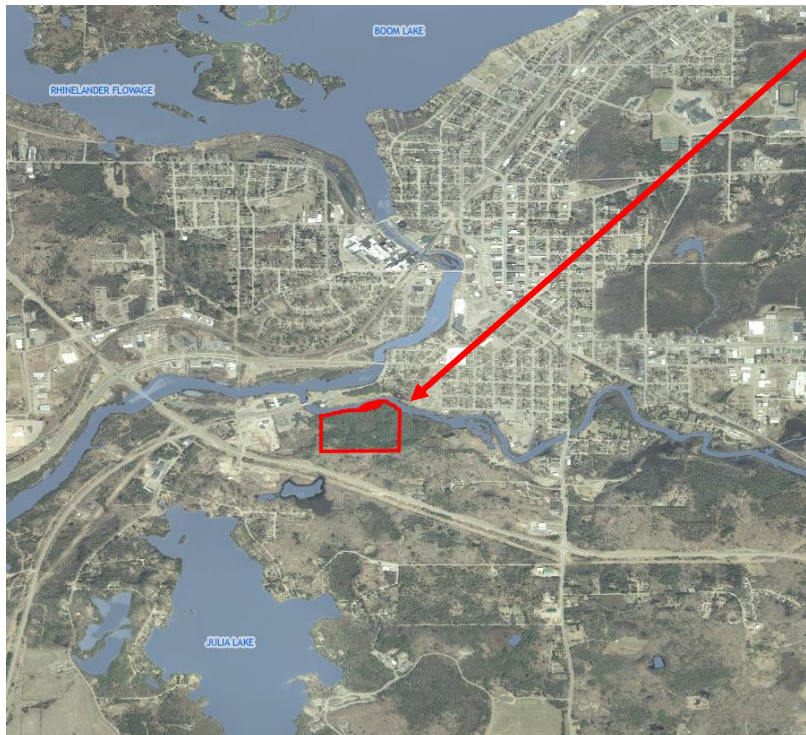
## Aquatic Forget-me-not Removal- Holmboe Conifer Forest SNA

June 17, 2022

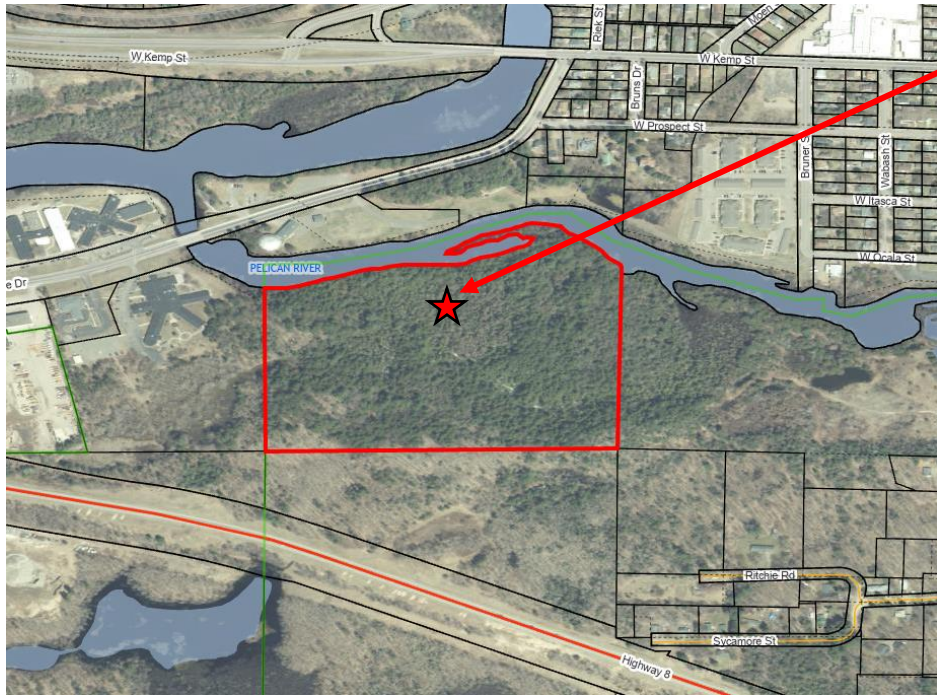
Oneida County Staff in Attendance: Madeline Hetland and Stephanie Boismenu

Report by: Madeline Hetland, AIS Project Assistant

Last year, Stephanie came across a patch of aquatic forget-me-nots growing along a small creek in the Holmboe Conifer Forest. Aquatic forget-me-nots are a restricted species that grow along streams, lakeshores, wetlands, wet soils, swamps, and rivers. They thrive in moist locations and crowd out native species. It is a highly competitive plant and reproduces rapidly. They are not of high importance on the invasive species list, but Holmboe is a state natural area that is being preserved and should be protected. Stephanie documented it with pictures, created a field map, and contacted the necessary people to figure out how to manage it. We met with Frank Schroyer, land conservation associate from the Northwoods Land Trust, to begin removing it today. The area it covered was approximately 500 sq. ft. There were plants on either side of the creek, and we used small scoop shovels and three-pronged rakes to remove the plants on dry land, and the plants near and in the creek came out easily by hand. We removed about 2/3 of the patch that we found, filling up two contractor sized garbage bags. We plan to go back sometime before July to harvest the rest before they flower and spread their seeds. A restoration plan will also be created to introduce native plants to the area and restructure the sides of the creek.



Holmboe Conifer Forest,  
Rhinelander WI



Site of Aquatic FMN

Field Map from  
6/17/2021

06/17/2021

Holtzoc SNA

PAGE	REFERENCE	DATE
	Holtzoc SNA	6/17/21
	Aquatic Forget-Ac-Nut	
	Site 1 7 1/2' x 35' = 262.5 sq Ft	
	Site 2 8' x 7' = 56 sq Ft	
	Site 3 6' x 3' = 18 sq Ft	
	Site 4 7' x 5' = 35 sq Ft	
	<u>371.5 sq Ft</u>	
	Site 5 9' x 9' = 81 sq Ft	
	Site 6 6' x 5' = 30 sq Ft	
	<u>482.5 sq Ft</u>	

Site 1  
 Site 2  
 Site 3  
 Site 4  
 Site 5  
 Site 6

Creek  
 Land - W. Side  
 E. Side  
 Downed Tree #1  
 Paper Birch  
 Ruts in the Rain

Lat 45.62831  
 Long -89.42355